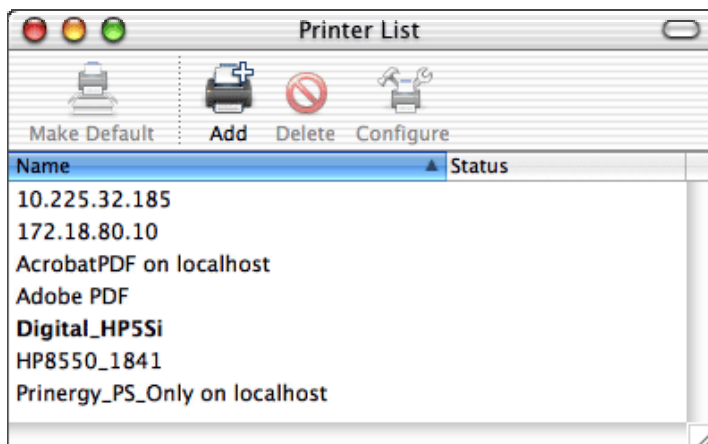


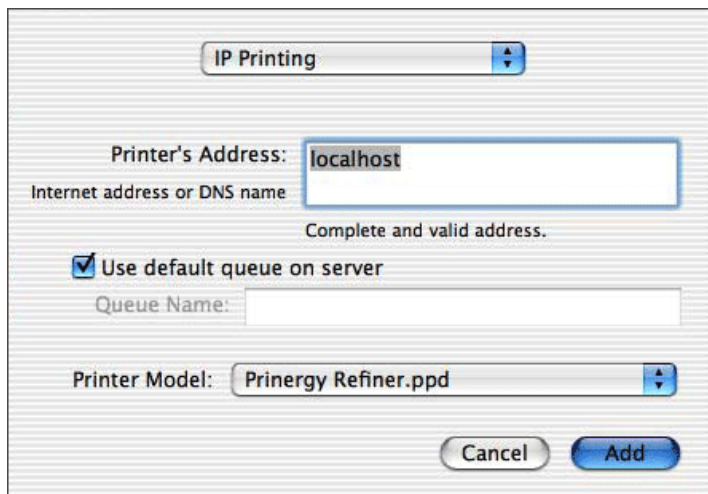
RR DONNELLEY

# INSTRUCTIONS FOR ADDING THE PRINERGY PRINTER

## OSX Prinergy Printer



Open Print Center from the Utilities directory. It will provide a list of existing, installed printers. It will also provide you with the opportunity to add a printer. Click on the Add icon.



From the list of printer communication methods that comes up (it will list Rendezvous, AppleTalk, IP Printing, and others), select IP Printing as the method. In printer address either type "localhost" (which is a default name that always means your own workstation) or the IP address of your own workstation. After that, select the Prinergy Refiner.ppd from the pop-up list. If you want to give this printer – which is technically a print queue – a custom name, turn off the "Use default queue on server" option and type in a name for the printer in the "Queue Name" field. Select this printer in Page Setup and Print dialog boxes. Last, but not least, in Print dialog make sure to specify "File" and "Postscript" for output destination rather than "Printer." Also, set "Save as File" settings within Print dialog box as described on our website.

RR DONNELLEY

www.rrdonnelley.com